

Alaska Department of Fish and Game

Habitat Section
Southeast Region



113-51-10040 Tributary 7

ADDITION

Water body name:

Survey date: 8/4/2023

Quad: Sitka C-4

Species & Lifestage:

Upper Reach Latitude: 57.549759 **Longitude:** -135.133138

Survey crew: NJ, DK

Lower Reach Latitude: 57.549400 **Longitude:** -135.133311

Findings: We surveyed this uncataloged stream using baited minnow traps and GPS and captured juvenile coho salmon, cutthroat trout, and Dolly Varden. Minnow traps were set upstream and downstream of a corrugated metal pipe culvert that crosses the road. No fish were caught above the pipe. The pipe inlet has boulders in it; water passing through pipe was low (Table 1; Figures 1–3). Fish habitat may continue upstream; recommend future investigation.

Recommendations: Add this uncataloged stream to the anadromous waters catalog for rearing coho salmon up to waypoint 439 (Figure 4).

Nomination: Pending

Table 1.–113-51-10040 tributary 7 survey data.

Waypoint	Latitude	Longitude	Notes	Stream Width ft	Stream Substrate	Habitat Features	Gradient %	Sample Effort	Sample Results
439	57.549742	-135.133053	Large boulders in pipe. Large boulder near inlet that backwaters a bit. No fish capture upstream of pipe; trap reset downstream.		Fine Organic Large Gravel		4-6	MT	2 CO 4 CT 2 DV



Figure 1. Juvenile coho salmon caught at waypoint 439.



Figure 2. Culvert inlet looking upstream at waypoint 439.



Figure 3. Culvert with low water flow looking upstream at waypoint 439.

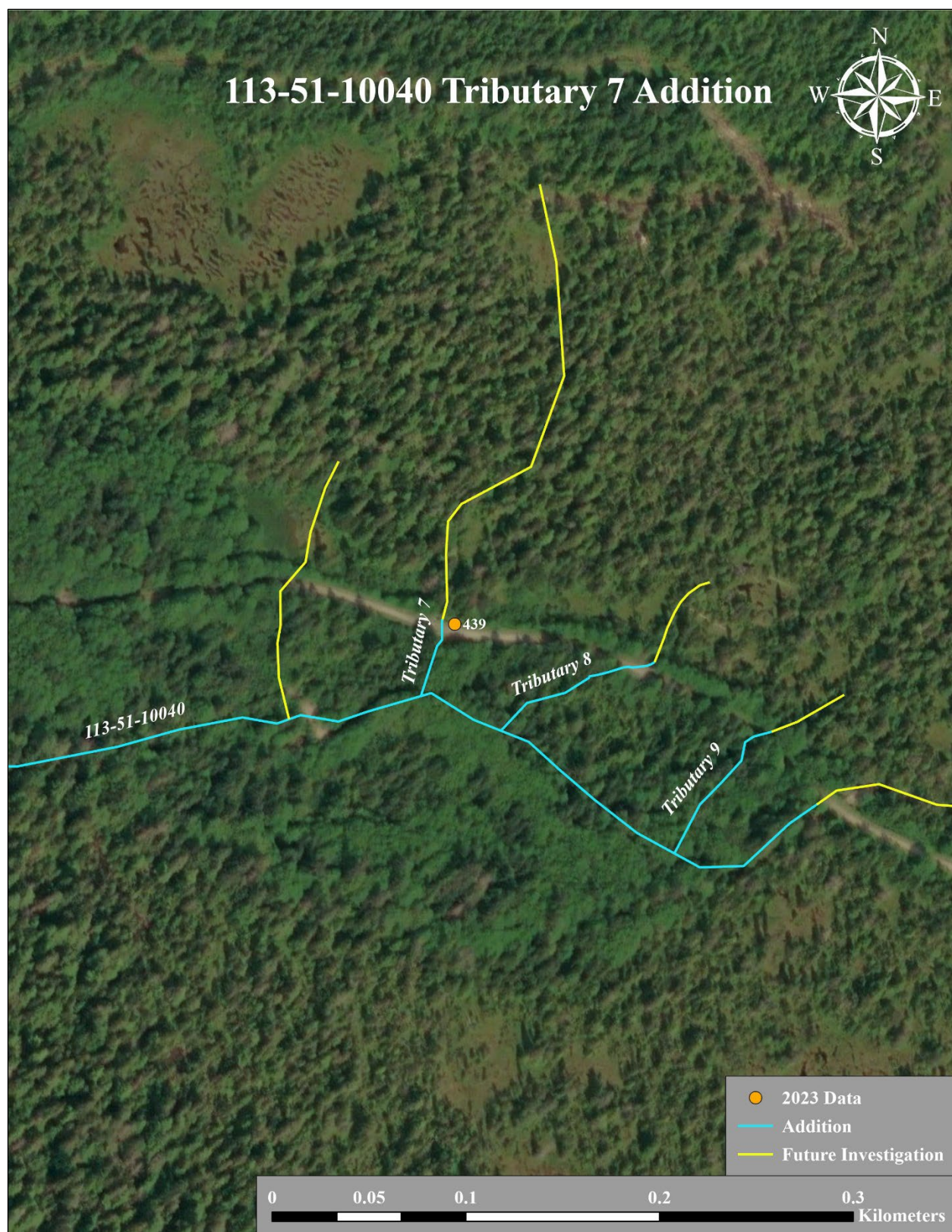


Figure 4. Stream No. 113-51-10040 tributary 7 addition map.